

COSM

Mini ChangeOver System

aerospace
climate control
electromechanical
filtration
fluid & gas handling
hydraulics
pneumatics
process control
sealing & shielding

Veriflo's Mini ChangeOver System:

The Mini ChangeOver System (COSM) is a compact turnkey module that assists the operator with their total gas management.

The COSM maintains a continuous gas delivery from two separate sources allowing for maximum cylinder gas usage from one source before automatically switching to the second source. The COSM lowers specialty gas costs by maximizing the consumption of gas from each cylinder.



Contact Information:

Parker Hannifin Corporation
Veriflo Division
250 Canal Blvd
Richmond, California 94804

phone 510 235 9590
fax 510 232 7396
veriflo.sales@parker.com

www.parker.com/veriflo

Product Features:

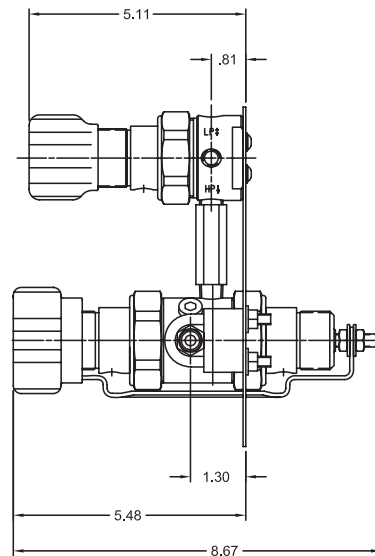
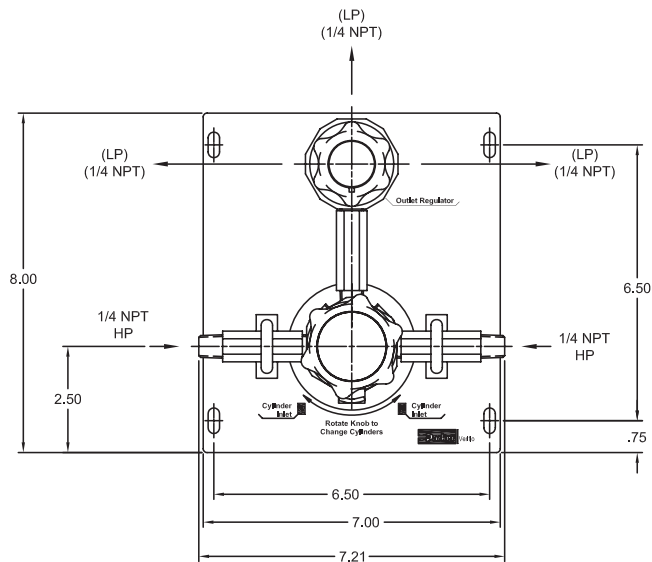
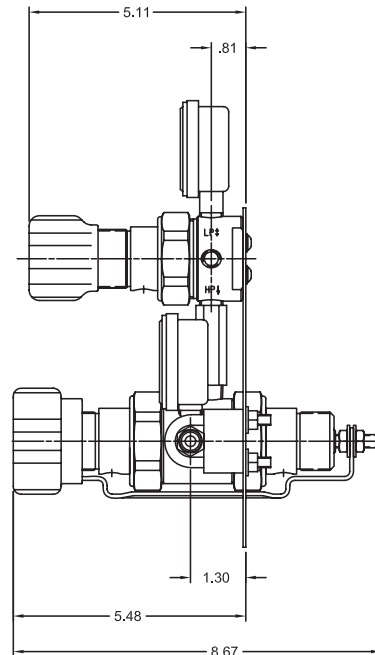
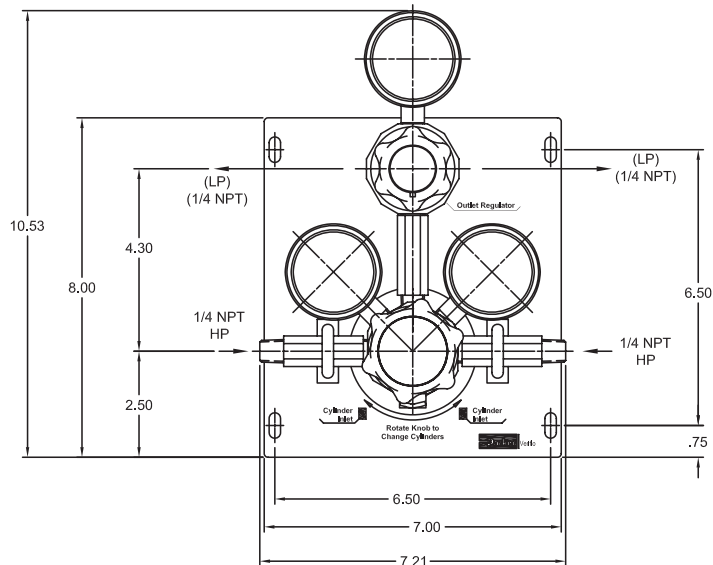
- Allows change out of depleted cylinder(s) while maintaining gas flow
- Especially suited for continuous on-stream analyzers.
- Compact design reduces footprint.
- Max Inlet Pressure of 3,000 psig with 3 delivery options (100, 150 or 200 psig).
- Outlet Regulator for constant or steady line pressure during change over.
- Regulator design integrates positive upward and downward stops which increases cycle life by preventing over stroking of the diaphragm
- Available in Stainless Steel or Brass.



ENGINEERING YOUR SUCCESS.

COSM

Dimensional Drawings



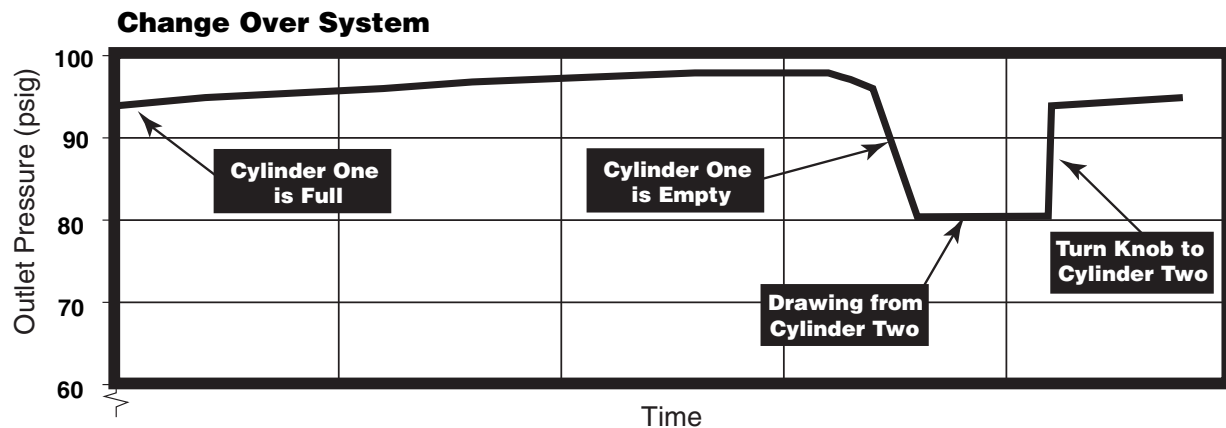
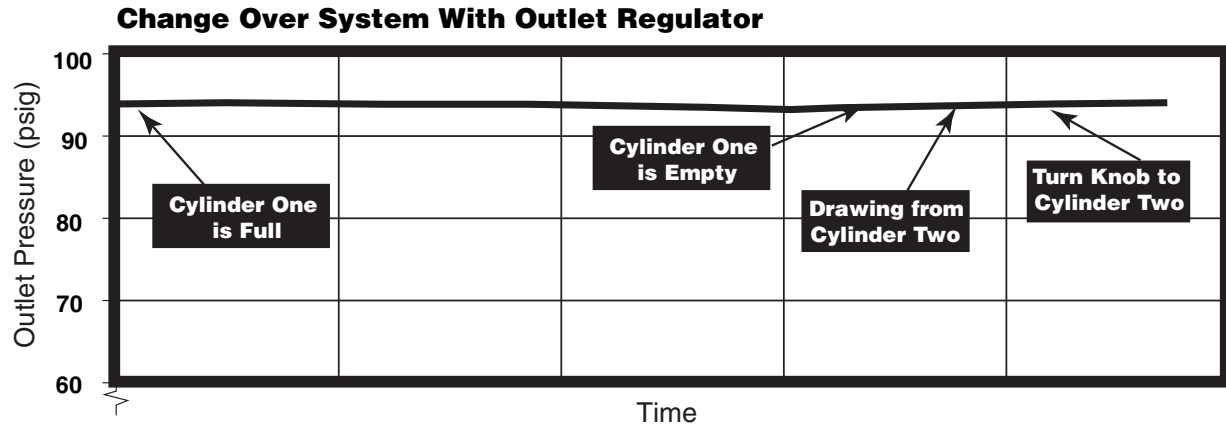
ChangeOver System Flow Rates (Based on 400 psig Cylinder Change)

COSM Model	Maximum Recommended Flow
COSM200	70 slpm N ₂
COSM150	70 slpm N ₂
COSM100	100 slpm N ₂

Safety Guide and Installation and Operating Instructions available at
www.parker.com/veriflo

COSM

Flow Curves



Ordering Information

Build an COSM by replacing the numbered symbols with an option from the corresponding tables below.

Sample: **COSM** **1** **2** **3** **4**
 Finished Order: **COSM100SORG**

1 **Pressure Setting**
 100 = 100 psig
 150 = 150 psig
 200 = 200 psig

2 **Body Material**
 S = 316L Stainless Steel
 B = Nickel Plated Brass

3 **Outlet Regulator**
 OR = Outlet Regulator (*std - no other options*)

4 **Optional Features**
 G = Gauges (*Includes 2 inlet gauges and one outlet gauge*)

COSM

Specifications

Materials of Construction		
Regulator Wetted	SS Version	Brass Version
Body	316L Stainless Steel	Nickel Plated Brass
Diaphragm	Hastelloy C-22®	
Poppet	Hastelloy C-276®	Phosphor Bronze
Poppet Spring	Inconel X750®	
Seat	PCTFE	
Compression Member	Inconel 625®	
Carrier	316L Stainless Steel	
Washer Back-up	316 Stainless Steel	Phosphor Bronze
O-ring Back-up	Fluorocarbon (FKM)	
Fittings	316 Stainless Steel	Brass
Inlet Screen/Filter	316 Stainless Steel (60µm mesh screen, 10µm Filter)	Copper and Phosphor Bronze (60µm mesh screen, 20µm Filter)
Regulator Non-wetted	SS Version	Brass Version
Cap	Nickel Plated Brass	
Nut	Stainless Steel	Nickel Plated Brass
Knob (Black)	ABS	

Functional Performance	
Design	
Burst Pressure	9,000 psig (620 barg)
Proof Pressure	4,500 psig (310 barg)
Flow Capacity	C _v 0.06
Leak Rate	
Internal:	Bubble Tight
External:	Bubble Tight
Supply Pressure Effect	0.01 psig/100 psig (0.0007 barg/7 barg)
Approx. Weight	
Stainless Steel:	8.4 lbs without gauges
Brass:	8.4 lbs without gauges

Operating Conditions	
Maximum Inlet	3000 psig (207 barg)
Outlet	up to 200 psig
Temperature	-40°F to 150°F (-40°C to 66°C)

Inconel® is a registered trademark of Special Metals Corporation
Hastelloy C-22®, and Hastelloy C-276® are registered trademarks of Haynes International, Inc.

OFFER OF SALE:

The items described in this document are hereby offered for sale by Parker-Hannifin Corporation, its subsidiaries or its authorized distributors. This offer and its acceptance are governed by the provisions stated in the detailed "Offer of Sale" elsewhere in this document or available at www.parker.com/veriflo

WARNING USER RESPONSIBILITY

FAILURE OR IMPROPER SELECTION OR IMPROPER USE OF THE PRODUCTS DESCRIBED HEREIN OR RELATED ITEMS CAN CAUSE DEATH, PERSONAL INJURY AND PROPERTY DAMAGE. THIS DOCUMENT IS FOR REFERENCE ONLY. PLEASE CONSULT FACTORY FOR LATEST PRODUCT DRAWINGS AND SPECIFICATIONS

This document and other information from Parker-Hannifin Corporation, its subsidiaries and authorized distributors provide product or system options for further investigation by users having technical expertise.

The user, through its own analysis and testing, is solely responsible for making the final selection of the system and components and assuring that all performance, endurance, maintenance, safety and warning requirements of the application are met. The user must analyze all aspects of the application, follow applicable industry standards, and follow the information concerning the product in the current product catalog and in any other materials provided from Parker or its subsidiaries or authorized distributors.

To the extent that Parker or its subsidiaries or authorized distributors provide component or system options based upon data or specifications provided by the user, the user is responsible for determining that such data and specifications are suitable and sufficient for all applications and reasonably foreseeable uses of the components or systems.